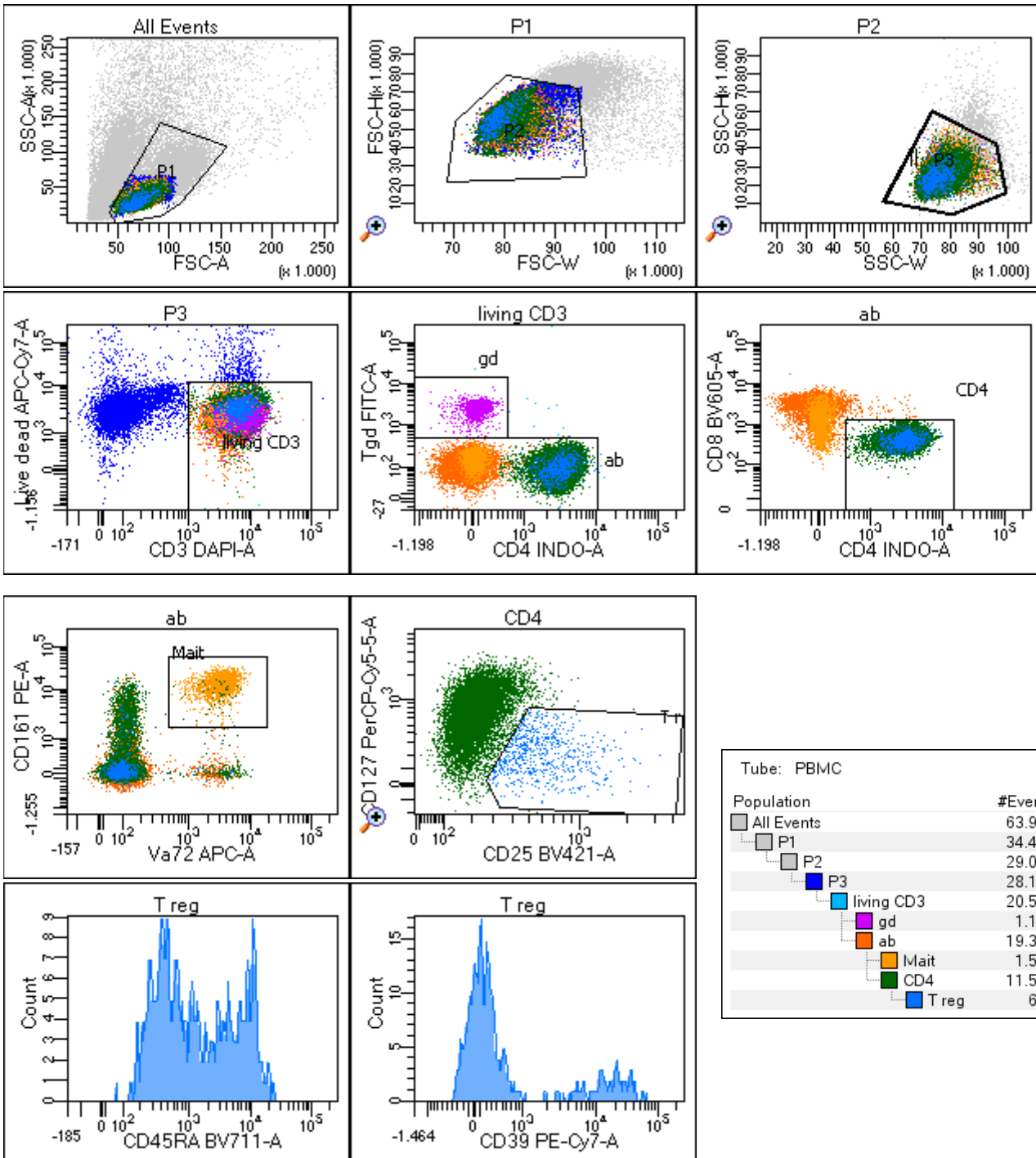


Sort Beispiele

10-Farb-Analyse:	BUV395	CD3	3-Populationen gleichzeitig Sortieren:	1. RA gd
	BUV737	CD4		2. RA Mait
	BV421	CD25		3. RA Treg
	BV605	CD8		
	BV711	CD45RA		
	FITC	Tgd		
	PerCP-Cy5.5	CD127		
	PE	CD161		
	PE-Cy7	CD39		
	APC	Va7.2		



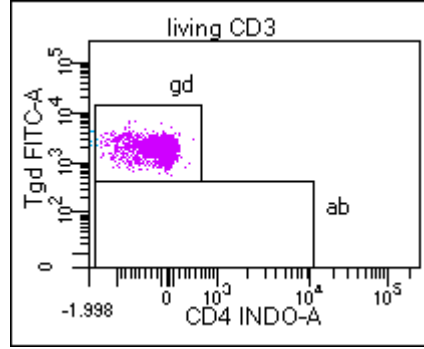
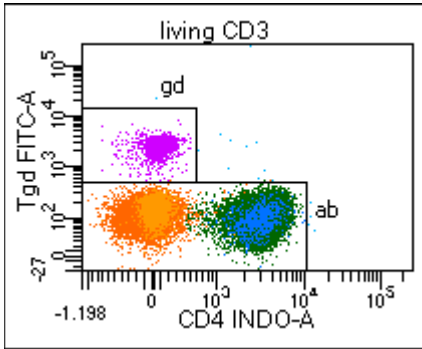
Tube: PBMC

Population	#Events	%Parent	%Total
All Events	63.987	###	100.0
P1	34.467	53.9	53.9
P2	29.076	84.4	45.4
P3	28.183	96.9	44.0
living CD3	20.586	73.0	32.2
gd	1.177	5.7	1.8
ab	19.393	94.2	30.3
Mait	1.577	8.1	2.5
CD4	11.566	59.6	18.1
T reg	642	5.6	1.0

1. gamma delta T Zellen:

vor Sortierung: 5,7 %

nach Sortierung: 99,8%



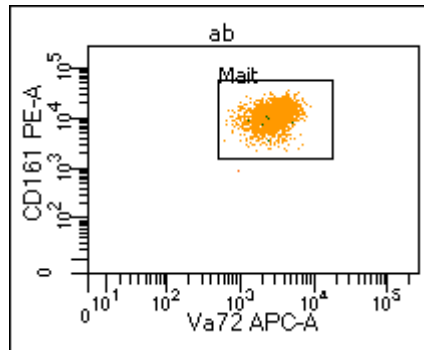
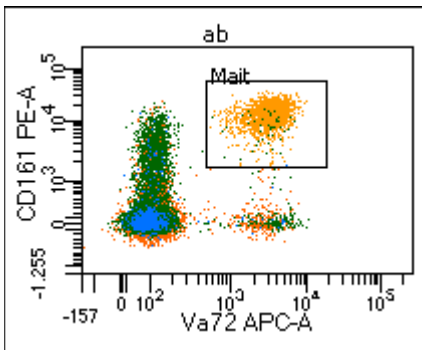
Tube: RA gd

Population	#Events	%Parent	%Total
All Events	3.453	###	100,0
P1	3.352	97,1	97,1
P2	3.331	99,4	96,5
P3	3.331	100,0	96,5
living CD3	3.326	99,8	96,3
gd	3.319	99,8	96,1
ab	1	0,0	0,0
Mait	0	0,0	0,0
CD4	0	0,0	0,0
T reg	0	###	0,0

2. Mait Zellen:

vor Sortierung: 8,1 %

nach Sortierung: 100%



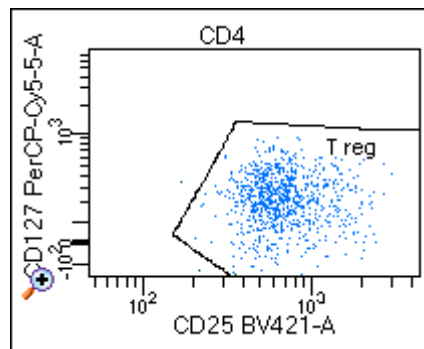
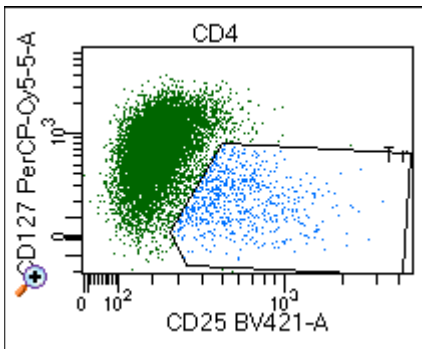
Tube: RA Mait

Population	#Events	%Parent	%Total
All Events	2.417	###	100,0
P1	2.348	97,1	97,1
P2	2.340	99,7	96,8
P3	2.339	100,0	96,8
living CD3	2.336	99,9	96,6
gd	0	0,0	0,0
ab	2.335	100,0	96,6
Mait	2.334	100,0	96,6
CD4	6	0,3	0,2
T reg	0	0,0	0,0

3. regulatorische T-Zellen:

vor Sortierung: 5,6 %

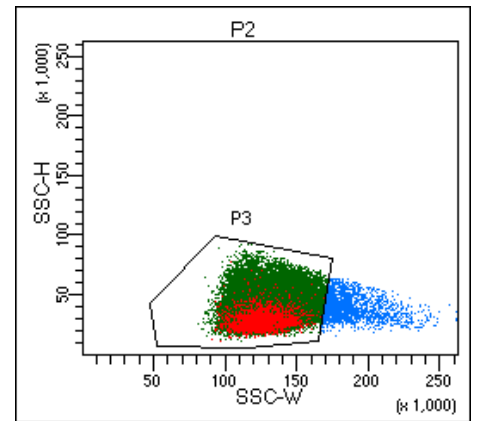
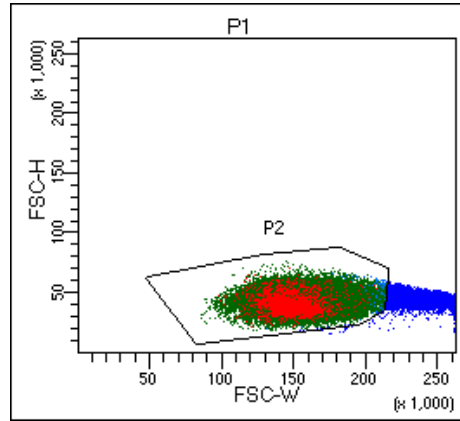
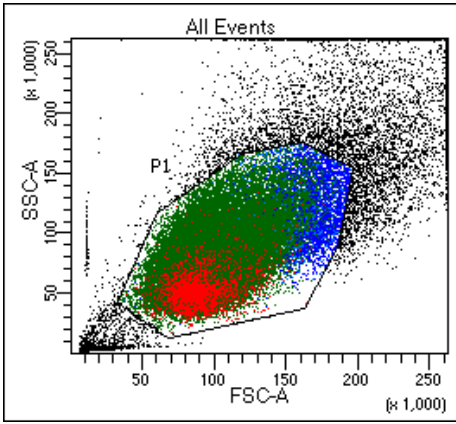
nach Sortierung: 99,4 %



Tube: RA Reg

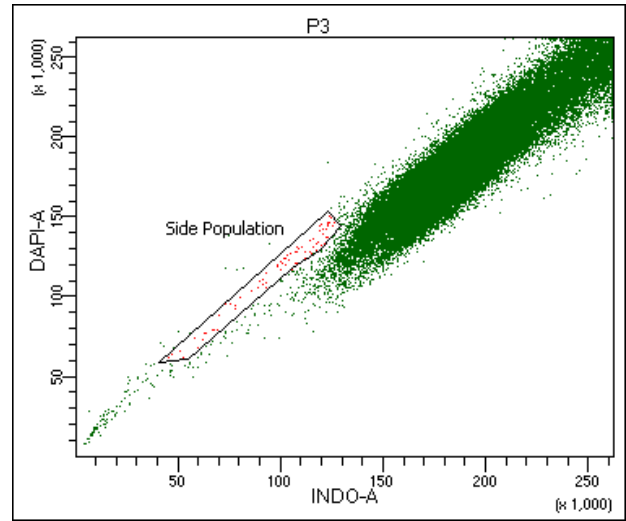
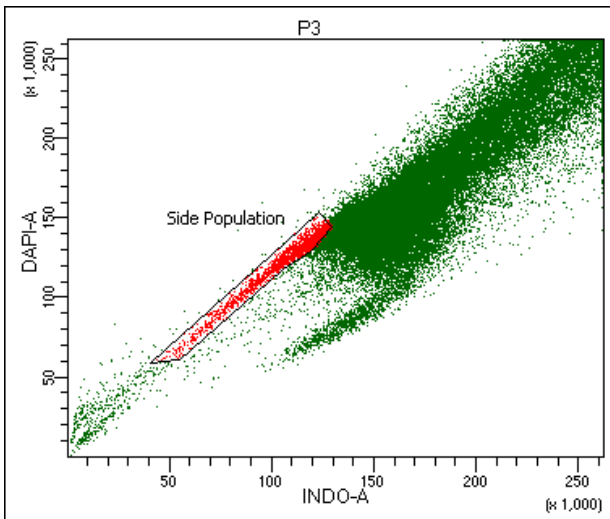
Population	#Events	%Parent	%Total
All Events	1.026	###	100,0
P1	933	90,9	90,9
P2	920	98,6	89,7
P3	919	99,9	89,6
living CD3	918	99,9	89,5
gd	0	0,0	0,0
ab	918	100,0	89,5
Mait	2	0,2	0,2
CD4	886	96,5	86,4
T reg	881	99,4	85,9

Side Population



1. Hoechst: 2,3%

2. Hoechst + Verapamil: 0,1%



Tube: HT29

Population	#Events	%Parent	%Total
All Events	100,000	####	100.0
P1	92,821	92.8	92.8
P2	87,580	94.4	87.6
P3	85,731	97.9	85.7
Side Population	1,993	2.3	2.0

Tube: HT29 + Verapamil

Population	#Events	%Parent	%Total
All Events	100,000	####	100.0
P1	85,823	85.8	85.8
P2	82,587	96.2	82.6
P3	81,761	99.0	81.8
Side Population	81	0.1	0.1